

# SPEECH ACOUSTICS IN A NOISY ENVIRONMENT

Kimary Shahin<sup>1</sup>, William H. McKellin<sup>2</sup>, Janet Jamieson<sup>3</sup>, Murray Hodgson<sup>4</sup>, and M. Kathleen Pichora-Fuller<sup>5</sup>

<sup>1</sup>Inst for Hearing Accessibility Research, U of British Columbia, Vancouver, BC, V6T 1Z3 shahin@interchange.ubc.ca

<sup>2</sup>Dept of Anthropology & Sociology, UBC, Vancouver, BC, Canada V6T 1Z1 mcke@interchange.ubc.ca

<sup>3</sup>Dept of Educational & Counselling Psych, & Special Education, UBC, Vancouver, BC, V6T 1Z4 janet.jamieson@ubc.ca

<sup>4</sup>School of Occupational & Env Hygiene/Dept of Mechanical Eng, UBC, Vancouver, BC, V6T 1Z3 hodgson@mech.ubc.ca

<sup>5</sup>Inst for Hearing Accessibility Research, UBC, now at Dept of Psychology and Program in Communication, Culture & Information Technology, University of Toronto at Mississauga, Mississauga, Ontario L5L 1C6 kpfuller@utm.utoronto.ca

## 1. INTRODUCTION

This paper reports on one aspect of the Acoustic Ecology project of the UBC Institute for Hearing Accessibility Research. We examined the effect of a noisy environment on speech communication, with the aim of testing our hypothesis that a noisy room is a hearing-impairing room (Jamieson et al., in prep.). We predicted that the speech characteristics of normal-hearing people in a noisy environment will be similar to those of hearing-impaired people in non-noisy environments. Extensive video, audio, and dosimeter data were evaluated in an examination of discourse productions and shifts of attention.

The speech characteristics of hearing-impaired people include: raised  $f_0$ ; reduced pitch range; reduced or excessive pitch variation; non-normal pitch contours, lack of terminal rise; lack of normal pitch declination; lack of normal pitch rhythm, i.e., distinction between stressed vs. unstressed units; breathy phonation; vocal tension/harshness; non-normal phoneme duration; inappropriate pausing; nasality; and lowered vowel formants. (See Bench 1992, Chen 1995, Higgins et al. 1994, Itoh & Horaii 1985, Kato 2001, Kotby et al. 1996, McGarr & Whitehead 1992, O'Halpin 2001 and references therein, Pisani 1982, Whitehead & Whitehead 1985, Wirz 1988, Youdelman et al. 1989.)

Our research question is: *Does the speech of normal-hearing people in a noisy environment show the characteristics listed above?*

## 2. METHOD

The subjects were normal-hearing adults aged 24 to 57 ( $n = 12$ ) and children aged 7½ to 13 ( $n = 24$ ) of both genders. Their speech was recorded in naturalistic noisy environments, a real restaurant setting for the adults and real classrooms (grades 1-3, 5, and 7) for the children. Background noise levels were up to 70 dB (average A-weighted Leq). The noisy environment speech was recorded as received by listeners' ears at binaural ear-level

microphone sets, since listeners' ears are the site of any interactionally functional signals. The participants' speech was also recorded with a unidirectional microphone in a soundbooth. The DAT recordings were then loaded onto computer and the speech signals were acoustically analysed using Kay's Multi-Speech 3700®. The acoustic characteristics of the speech in the two environments were compared to identify any of the characteristics of hearing-impaired speech which might be found in the participants' noisy environment speech but not their speech in the soundbooth. Where they are robust, we attribute such characteristics to the noisy environment.

## 3. SOME RESULTS AND ANTICIPATIONS

Preliminary results indicate that the answer to our research question is 'yes' in several cases. For example, Figure 1 illustrates reduced pitch variation in the noisy environment (sd: 51.05 vs. 65.40 in the quiet environment) for Meg, an adult participant.

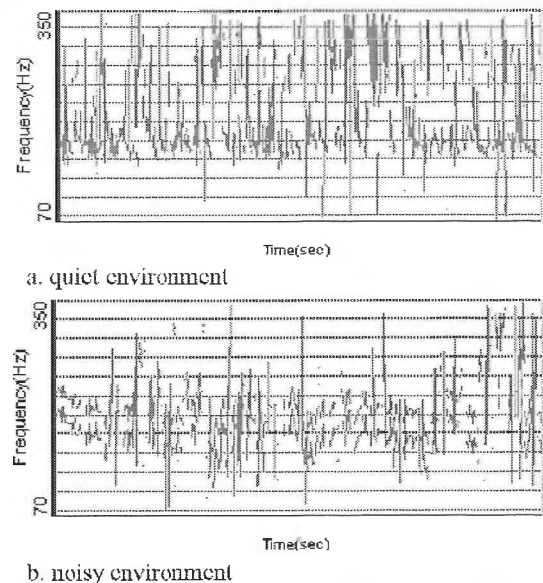


Fig. 1. Pitch contours illustrating reduced pitch variation in noisy environment adult speech.

The full results of our study will be reported. We anticipate that the preliminary results will hold for the full dataset, in support of our hypothesis. This would raise several further issues: 1. to what extent are there similarities between the characteristics for which our findings are 'yes' and the Lombard Effect (Lombard 1911, Junqua 1996), such that the Lombard Effect might be alternatively labelled 'hearing-impaired speech by normal-hearing people'; 2. does the 'hearing-impaired speech by normal-hearing people' effect cast doubt on physical or developmental explanations applied to the hearing impairment (Most & Frank 1994); 3. what potential further support exists for our hypothesis from people's adjustment of their speech to accommodate their listeners' hearing impairment (Imaizumi & Hayashi 1995), if we consider that the normal listeners effectively experience hearing loss in adverse listening conditions; 4. when and why is temporary hearing impairment in a noisy environment interpreted or not interpreted as a signal of cognitive impairment (Pichora-Fuller & Kirson 1994, McKellin 1994); 5. what are the implications of such acoustic ecology issues for environmental design and evaluation.

## REFERENCES

- Bench, R. J. (1992). *Communication Skills in Hearing-impaired Children*. San Diego: Whurr.
- Chen, M. Y. (1995). Acoustic parameters of nasalized vowels in hearing-impaired and normal-hearing speakers. *JASA* 98:2443-2453.
- Higgins, M. B., Carney, A. E. & L. Schulte (1994). Physiological assessment of speech and voice production of adults with hearing loss. *JSTIR* 37:510-521.
- Imaizumi, S. & A. Hayashi (1995). Listener-adaptive adjustments in speech production: evidence from vowel devoicing. *Ann. Bull. RIPI*. 29:43-48.
- Itoh, M. & Y. Horii (1985). Airflow, volume and durational characteristics of oral reading by the hearing-impaired. *J. Comm. Dis.* 18:393-407.
- Jamieson, J., McKellin, W. II., Shahin, K. & M. K. Pichora-Fuller (in prep.). How communicators adapt to hearing-impairing rooms (provisional title). Ms., University of British Columbia.
- Junqua, J.-C. (1996). The influence of acoustics on speech production: a noise-induced stress phenomenon known as the Lombard reflex. *Sp. Comm.* 20:13-22.
- Kato, Y. (2001). Vowel formant frequency characteristics of children with hearing impairments. Paper presented at the 17<sup>th</sup> Int. Congress on Acoustics, Rome, 2-7 September 2001.
- Kotby, M. N., Wafy, W. A., Rifaie, N. A., Abdel-Nasserr, N. II., Aref, F. F. & A. A. Elsharkawy (1996). Multidimensional analysis of speech of hearing impaired children. *Scand. Aud.* 25, sup.:27-33.
- Lombard, E. (1911). Le signe de l'élévation de la voix. *Ann. Maladies Oreille, Larynx, Nez, Pharynx* 27:101-119.
- McGarr, N. S. & R. Whitehead (1992). Contemporary issues in phoneme production by hearing-impaired persons: physiological and acoustic aspects. *Volta Rev.* 94:33-45.
- McKellin, W. II. (1994). Hearing and listening: audiology, hearing, and hearing impairment in everyday life. *J. Sp.-Lang. Path. and Aud.* 18:212-219.
- Most, T. & Y. Frank (1994). The effects of age and hearing loss on tasks of perception and production of intonation. *Volta Rev.* 96:137-149.
- O'Halpin, R. (2001). Intonation issues in the speech of hearing impaired children: analysis, transcription and remediation. *Clin. Ling. & Phon.* 15:529-550.
- Pichora-Fuller, M. K. & S. R. Kirson (1994). How allocation of cognitive resources may alter handicap. *J. Sp.-Lang. Path. and Aud.* 18:223-234.
- Pisani, A. F. M. (1982). Disturbi di ricezione e disturbi di emissione riflessi nel linguaggio degli ipoacusici: una prospettiva fonetica (Disturbances in reception and emission reflected in the language of the hearing-impaired: a phonetic perspective). *Rass. Ital. di Ling Appl.* 14:101-121.
- Whitehead, R. L. & B. II. Whitehead (1985). Acoustic characteristics of vocal tension/harshness in the speech of the hearing impaired. *J. Comm. Dis.* 18:351-361.
- Wirz, S. L. (1988). *Vocal Characteristics of Hearing Impaired People*. Ph. D. diss., University of Edinburgh.
- Youdelman, K., MacEachron, M. & N. McGarr (1989). Using visual and tactile sensory aids to remediate monotone voice in hearing-impaired speakers. *Volta Rev.* 91:197-207.